

## INSTALLATION INSTRUCTIONS

### THRESHER GRIPS FOR INDIAN®, SATIN BLACK

5945

#### THANK YOU FOR CHOOSING KURYAKYN!

Protect yourself and others from possible injury and property damage or loss. Pay close attention to all instructions, warnings, cautions, and notices regarding the installation, use, and care of this product.

**WARNING** THIS INDICATION ALERTS YOU TO THE FACT THAT IGNORING THE CONTENTS DESCRIBED HEREIN CAN RESULT IN POTENTIAL DEATH OR SERIOUS INJURY.

**CAUTION** THIS INDICATION ALERTS YOU TO THE FACT THAT IGNORING THE CONTENTS DESCRIBED HEREIN CAN RESULT IN MINOR OR MODERATE POTENTIAL INJURY.

**NOTICE** THIS INDICATION ALERTS YOU TO THE FACT THAT IGNORING THE CONTENTS DESCRIBED HEREIN MAY NEGATIVELY AFFECT PRODUCT PERFORMANCE AND FUNCTIONALITY OR DAMAGE THE PRODUCT ITSELF OR THE PRODUCT TO WHICH IT IS BEING ATTACHED.

#### ENSURE THAT THE FOLLOWING PARTS HAVE BEEN INCLUDED IN THE KIT:

- 1 Clutch Side Grip
- 1 Throttle Side Grip
- 1 Adhesive Tube

#### YOU WILL ALSO NEED:

Torx drivers set, Phillips screwdriver, clean rag, ammonia based cleaner (Windex)

PICTURES SHOWN ARE OF THE CHROME PARTS. INSTALLATION OF THE BLACK PARTS WILL BE THE SAME.

**NOTICE** THESE INSTALLATION INSTRUCTIONS CONTAIN IMPORTANT INFORMATION. ENSURE THE END USER RECEIVES THIS COPY AND IS AWARE OF ITS IMPORTANCE FOR FUTURE USE.

- STEP 1** Read and understand all steps in the instructions before starting the installation. Park the motorcycle on a hard, level surface and turn off the ignition. Let motorcycle cool.



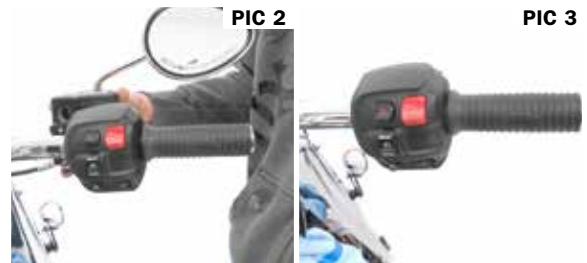
CLUTCH SIDE GRIP

THROTTLE SIDE GRIP

#### THROTTLE SIDE INSTALLATION

- STEP 2** Refer to PIC 2 and 3. Remove the two screws securing the brake lever/master cylinder assembly to the handlebars. Carefully set the assembly off to the side.

*Note: Be sure the brake fluid does not leak from the master cylinder and drip onto painted surfaces.*



PIC 2

PIC 3

- STEP 3** Remove the four (4) screws on the back-side of the throttle-side switch housing, and separate the housing assembly.

- STEP 4** Refer to PIC 4. Note how the plastic throttle sleeve fits into the channel in the switch housing. Carefully slide the existing grip off of the handlebar.



PIC 4

**KURYAKYN.COM**

## INSTALLATION INSTRUCTIONS

### THRESHER GRIPS FOR INDIAN®, SATIN BLACK

5945

-CONTINUED-

- STEP 5** Refer to PIC 5. Locate provided Throttle Grip. Align and place the new grip onto the handlebar. Rotate the grip on the bar until it aligns with the switch housing, then slide it into place.



PIC 5

- STEP 6** Refer to PIC 6. Reassemble the switch housing and secure with the four (4) screws that were removed in Step 3. Reassemble the brake lever/master cylinder assembly onto the handlebar.



PIC 6

### CLUTCH SIDE INSTALLATION

- STEP 7** Refer to PIC 7. Peel back on the grip and remove the screw. Set it aside it will not be reused. Remove the clutch-side grip from the handlebar. The grip may be glued to the handlebar and you may need to twist the grip to break the adhesive bond.



PIC 7

- STEP 8** Refer to PIC 8. Prepare the clutch-side handlebar for proper adhesion by sanding the surface with 80-100 grit sandpaper or emery cloth. Remove any glue residue from the handlebar.



PIC 8

- STEP 9** With an ammonia based cleaner (Windex) and a clean rag, remove any contaminants from the handlebar and the inside of the grip.

*Note: Determine the desired orientation of the clutch-side grip BEFORE gluing and installing. The supplied adhesive sets up ALMOST INSTANTLY in the absence of air. There is enough time to slide the grip into place, but ONCE IT STOPS MOVING, IT CANNOT BE ADJUSTED.*



PIC 9

**⚠ CAUTION** AVOID CONTACT WITH EYES, SKIN AND CLOTHING. AVOID BREATHING VAPORS OR MISTS OF THIS PRODUCT. WASH THOROUGHLY AFTER HANDLING. AVOID CONTACT WITH FABRIC OR PAPER GOODS. CONTACT WITH THESE MATERIALS MAY CAUSE RAPID POLYMERIZATION WHICH CAN GENERATE SMOKE AND STRONG IRRITATING VAPORS, AND CAUSE THERMAL BURNS.

- STEP 10** Refer to PIC 9. Test fit the Clutch Side Grip on the handlebar; determine the orientation of the grip before gluing it to the handlebar.

- STEP 11** Open the supplied tube of adhesive and squeeze all of the glue onto the inner side walls of the clutch-side grip. Rotating the grip while applying the glue will help distribute it evenly. Make sure you get the glue all the way to the end of the rubber insert in the grip.

**KURYAKYN.COM**

## INSTALLATION INSTRUCTIONS

### THRESHER GRIPS FOR INDIAN®, SATIN BLACK

5945

-CONTINUED-

**STEP 12** In one smooth motion, slide the grip onto the handlebar and into position. Rotate it back and forth slightly as you slide it on to help distribute the glue evenly and keep the grip from “plowing” the glue up against the switch housing. **YOU MUST WORK QUICKLY TO GET THE DESIRED POSITION BEFORE THE GLUE DRIES. (APPROX. 6 SECONDS).**

**STEP 13** Once in place, squeeze the grip firmly to press the rubber against the bar and hold for 15 seconds. Allow at least 30 minutes to cure before operating the motorcycle.

**STEP 14** Reinstall the main fuse. Ensure proper throttle and brake function **BEFORE** operating the motorcycle

FINAL



#### NOTICE

**IT IS THE INSTALLER'S RESPONSIBILITY TO ENSURE THAT ALL OF THE FASTENERS (INCLUDING PRE-ASSEMBLED) ARE TIGHTENED BEFORE OPERATION OF THE MOTORCYCLE. KURYAKYN WILL NOT PROVIDE WARRANTY COVERAGE ON PRODUCTS OR COMPONENTS LOST DUE TO IMPROPER INSTALLATION OR LACK OF MAINTENANCE. PERIODIC INSPECTION AND MAINTENANCE ARE REQUIRED ON ALL FASTENERS.**

#### LIMITED WARRANTY

Kuryakyn warrants that any Kuryakyn products sold hereunder, shall be free of defects in materials & workmanship for a period of one (1) year from the date of purchase by the consumer excepting the following provisions:

1. Kuryakyn shall have no obligation in the event the customer is unable to provide a receipt showing the date the customer purchased the product(s).
2. The product must be properly installed, maintained & operated under normal conditions.
3. Kuryakyn shall not be liable for any consequential & incidental damages, including labor & paint, resulting from failure of a Kuryakyn product, failure to deliver, delay in delivery, delivery in nonconforming condition, or for any breach of contract or duty between Kuryakyn & a customer.
4. Kuryakyn products are often intended for use in specific applications. Kuryakyn makes no warranty if a Kuryakyn product is used in applications other than intended.
5. Kuryakyn electrical products are warranted for one (1) year from the date of purchase by the consumer. L.E.D.'s contained in components of Kuryakyn products will be warranted for defects in materials & workmanship for 3 years from the date of purchase whereas all other components shall be warranted for one (1) year.
6. All warranty claims must be directed to the place of purchase. Merchandise sold through internet auction sites or any other unauthorized reseller shall not carry a Kuryakyn warranty. If unsure, please contact the place of purchase to verify they are an authorized Kuryakyn reseller.

#### RETURN POLICY

Merchandise determined to be defective may be returned up to one year from the date of purchase. Returns must be processed through original seller. Returned merchandise for any other reason other than warranty claims must be in like new condition & subject to a 20% restocking fee. All returns are subject to inspection for determination of full or partial credit. Any returned part that shows evidence of being used or installed contrary to manufacturer's instructions, &/or subjected to improper handling, packaging or return shipping by the customer, will not be eligible for exchange, refund or warranty consideration. All returned electrical items will be inspected & tested. If electrical item is deemed functional, no credit will be issued & item will be returned. All sales are final on discontinued or closeout merchandise.

©2015 KURYAKYN HOLDINGS, LLC ALL RIGHTS RESERVED

KURYAKYN, KURYAKYN K logo and the marks appearing on this instruction sheet are registered and common law trademarks of Kuryakyn Holdings except noted third-party trademarks. A full listing of trademarks and trademark registrations owned by Kuryakyn Holdings can be found at [www.kuryakyn.com/legal-notice](http://www.kuryakyn.com/legal-notice).

Emissions Notice: The California Air Resources Board (CARB) does not permit the use of aftermarket emission-related parts(s) that alter the performance of OEM emission-related devices unless CARB has issued an Executive Order, other than on racing vehicles on closed courses. Check your local laws and manufacturer's information.

Listed Manufacturers and product model names are for reference only. All product and company names are trademarks or registered trademarks of their respective holders. Use of them does not imply any affiliation with or endorsement by them. All specifications are subject to change without notice.

For additional information on third-party product and company names, please consult our Web page at [www.kuryakyn.com/legal-notice](http://www.kuryakyn.com/legal-notice)

**KURYAKYN.COM**

866 277 9598 | [INFO@KURYAKYN.COM](mailto:INFO@KURYAKYN.COM)

454 COUNTY ROAD VV SOMERSET, WI 54025